

Western Australia

PERTH

DAY TOURS & SHORT BREAKS

Pinnacles Desert | Margaret River | Wave Rock
New Norcia | Penguin Island | Rottnest Island

Why choose Australian Pinnacle Tours?

Locally owned and operated

We pride ourselves on our family values, we are a locally owned and operated company.

Exceptional safety record

All drivers are trained to provide you with a safe, comfortable and efficient transport service.

Travel in 5 star comfort

Our coaches are fitted with air conditioning, reclining seats and Wi-Fi.

Coaches fitted with seat belts

All our vehicles are fitted with seat belts and safety features to ensure the safety of our passengers.

Unparalleled sightseeing

We have a range of tours to suit your sightseeing needs, visiting all the must see destinations.

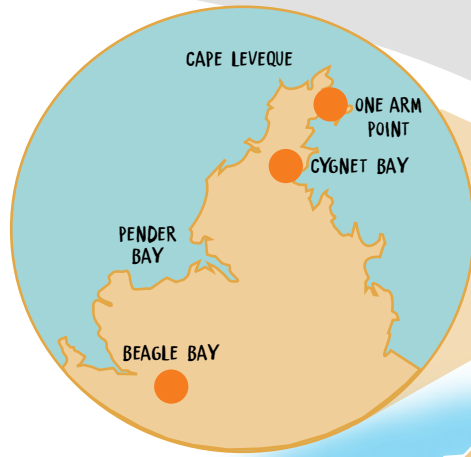
USB Ports and Wi-Fi

Most of our coaches are fitted with USB ports and Wi-Fi so you can stay connected.

Day Tour Operating Timetable

Tour Name	Code	M	Tu	W	Th	F	Sa	Su
Half Day Perth & Fremantle Explorer	PF	•	•	•	•	•	•	•
Perth & Fremantle Explorer with Cruise*	PFC		•			•	•	•
Perth City Walking Tour	ET-WT	•		•			•	
Margaret River, Busselton Jetty & Cape Leeuwin Lighthouse	MR	•	•		•	•	•	
Margaret River, Chocolate, Nougat, Wine and Coast	MR2			•				•
Pinnacles, Koalas, Sand Boarding & 4WD	P3	•	•	•	•	•	•	•
Pinnacles, Lancelin & Sand Boarding	PDE	•	•	•	•	•	•	•
Pinnacles, Yanchep & Swan Valley	PIN		•			•	•	
Pinnacles, Sunset & Night-time Stargazing	PSG	•		•	•	•		•
Pinnacles & New Norcia Benedictine History*	NN-P	•			•			
Pinnacles & Rottnest Sightseeing Package	P3RFF	•	•	•	•	•	•	•
4WD Sand Dunes & Sand Boarding	4WDLAN	•	•	•	•	•	•	•
Wave Rock, York, Aboriginal Cultural	WR		•	•		•		•
Penguin Island, Dolphins & Caversham Wildlife	ET-PIC			•			•	
Whale Watching (Late Aug - Early Dec)*	RFF-WWH	•		•	•	•	•	•
Rottnest Bayseeker Island Tour	BIT	•	•	•	•	•	•	•
Rottnest Train and Tunnel Tour	OHTT	•	•	•	•	•	•	•
Best of Rotto Package	RFF-BOR	•	•	•	•	•	•	•
Rottnest Grand Island Tour	GIT	•	•	•	•	•	•	•

*Please note these tours operate seasonally.



INDIAN OCEAN

DAMPIER PENINSULA

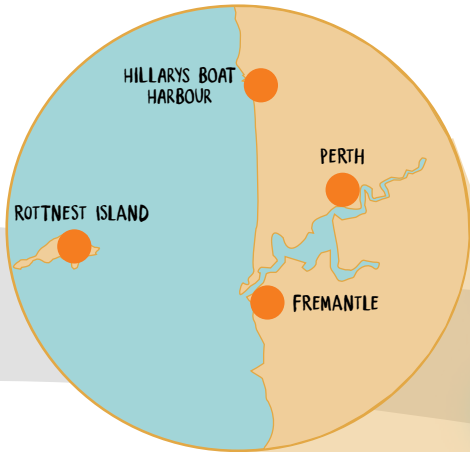
WINDJANA GORGE

BROOME

FITZROY CROSSING

PORT HEDLAND

EXMOUTH



MONKEY MIA

WESTERN AUSTRALIA

KALBARRI

HUTT LAGOON
(PINK LAKE) GERALDTON

THE PINNACLES

LANCELIN

NEW NORCIA

ROTTNEST ISLAND

PERTH

WAVE ROCK

FREMANTLE

PENGUIN ISLAND

BUSSELTON

MARGARET RIVER

BORANUP FOREST

AUGUSTA

MARGARET RIVER

AUGUSTA

PEMBERTON

ESPERANCE

ALBANY



PERTH CITY



Half Day Perth & Fremantle Explorer

Departs: **Coach:** Daily departures 8:00am
Cruise: Tue, Fri, Sat, Sun (Apr-Oct) Mon, Tue, Fri, Sat and Sun (Nov-Mar) departs 8:00am
Returns: **Coach:** 12:30pm **Cruise:** 2:00pm
Distance: 70km **Duration:** 4.5 hrs or 6 hrs

Prices 01/04/2024-31/03/2025	Tour Code	Adult	Concession	Child
	PF	\$84	\$76	\$50
PFC	\$129	\$121	\$80	

Tour Itinerary



A great taster tour, taking in Perth and Fremantle, affording the opportunity to drive around these iconic cities with various stops of interest.

Perth CBD

The tour takes in all the major attractions of the revitalised Perth CBD, including the Western Australian Cricket Ground (WACA) and Optus Stadium.



Kings Park

Then on to Kings Park Botanical Gardens, savouring the opportunity to view wildflowers or take in the stunning views from the war memorial looking back over the city skyline.



Millionaires' Row

The tour continues through the affluent Western Suburbs of Perth, known as Millionaires' Row, passing by Cottesloe Beach where the Indian Ocean sparkles.

Fremantle

Travel into historic Fremantle and view the impressive facades of this heritage listed city including a brief stop. Remain on the coach returning to Perth at approximately 12:30pm.

For those who select the Swan River Cruise return join the 12:45pm or 15:45pm Captain Cook Cruise (subject to availability) departing from Fremantle and enjoy wonderful views of the magnificent Swan River as you cruise the calm waters between Fremantle and Perth. Captain's commentary included.

Note: This tour terminates at Barrack Street Jetty in Perth and hotel drop offs are not included. Lunch is not included. Tour inclusions and itinerary are subject to variation due to road closures, events, roadworks or other factors beyond our control. Cruise operated by Captain Cook Cruises.

WALKING TOUR



Perth City Walking Tour

Departs: Mon, Wed, Sat 9:00am **Returns:** 10:30am
Duration: 1.5 hrs

Prices 01/04/2024-31/03/2025	Tour Code	Price
	ET-WT	FREE

Tour Itinerary

Explore the dynamic and vibrant city of Perth on a 1.5-hour walking tour with a fun local tour guide.

Historical and Cultural Landmarks

Visit fantastic locations, such as arty Northbridge, Yagan Square, Wolf Lane and London Court. (Locations visited are subject to change).



Discover hidden laneways and arcades, Perth's street art scene, historic buildings, gardens and exciting new developments of the Perth CBD.

Introduction to Perth

Our knowledgeable guides can also provide information on how to make the most of your time in Perth, giving new visitors information on how best to get around the city and how to explore more of what Perth has to offer.



Elizabeth Quay

Finish your tour at the prized jewel of Perth CBD; Elizabeth Quay, with views across the famous Swan River and home to the iconic Swan Bell Tower.



Meeting point is the Big Green Cactus, opposite Perth Train Station.

Note: Bookings are essential. This tour is complimentary, with no catches or hidden surprises; it is an opportunity for us to showcase Perth and get you excited to venture further afield.

MARGARET RIVER NATURAL WONDERS



Margaret River, Busselton & Cape Leeuwin Lighthouse

Departs: Mon, Tue, Thu, Fri, Sat 8:00am
Distance: 950km

Returns: 8:30pm
Duration: 12.5 hrs

Prices	Tour Code	Adult	Concession	Child
01/04/2024-31/03/2025	MR	\$245	\$220	\$138

Tour Itinerary



Busselton Jetty

We travel south from Perth driving through farmland with grazing cattle and passing by coastal towns along the awe-inspiring coastline. Arriving at Busselton, we stop for morning tea (own expense) and to view the iconic Busselton Jetty.

Local Brewery and Winery

Driving into the heart of the region, we head to one of Margaret River's boutique breweries for complimentary beer tastings and lunch. Before lunch, we sample some local wines.



Mammoth Cave

Next it's on to Mammoth Cave, a natural time capsule that offers an extraordinary insight into Australia's ancient past. Enjoy a guided tour through this Gothic cave with vast chambers that reveal fascinating information on the region's flora and fauna. Home to ancient fossil remains of long extinct giant animals, discover a 50,000 year old 'Zygomaturus' jawbone embedded in the cave wall.

Cape Leeuwin Lighthouse

Continuing south, through the Boranup Forest of enormous Karri trees, we reach the most fascinating part of the region at Augusta. Here we visit Cape Leeuwin Lighthouse - situated at the tip of the spectacular Cape Leeuwin peninsula and named by National Geographic as being one of the top three ocean views in the world.



Margaret River Town

Then we head north to the township of Margaret River for a brief stroll on the main street and a chance to explore the quaint shops and cafes that line the strip. Then it's back to Perth, arriving approximately at 8:30pm.

Note: Passengers will not have time on this tour to travel down Busselton Jetty. Please wear comfortable walking shoes, bring a water bottle, a hat, sunscreen and your camera. During the winter months, suitable wet weather clothing, footwear and an umbrella recommended.

MARGARET RIVER FOOD & WINE



Chocolate, Nougat, Wine and Coastal Tour

Departs: Wed, Sun 8:00am
Distance: 950km

Returns: 8:30pm
Duration: 12.5 hrs

Prices	Tour Code	Adult	Concession	Child
01/04/2024-31/03/2025	MR2	\$245	\$220	\$138

Tour Itinerary



Cowaramup and Chocolate Factory

We travel south from Perth, driving through the farmland and grazing cattle, before stopping for morning tea (own expense) at the quirky and picturesque town of Cowaramup, famous for the 42 life-sized fibreglass Friesian cows that are located throughout. After a brief stop, we venture onward to Provideore and the Margaret River Chocolate Company, where you can sample the delicious chocolate, nougat and gourmet nuts on offer.



Local Winery & Gourmet Produce

Driving into the heart of Margaret River, we enjoy wine and nougat tastings at Bettenays Nougat Company, before your included lunch at one of Margaret River's famous wineries. Next it's on to Vasse Virgin, where you can sample a huge selection of soaps, oils and other products, before we enjoy chocolate and wine tastings at Gabriels Chocolates, and the accompanying House of Cards winery.

Canal Rocks

Continuing our trip out to the coast, we take in the spectacular seascape views across the Indian Ocean from Canal Rocks, following the walkways out over these chiselled granite blocks to see the rushing ocean beneath.



Busselton Jetty

We start our return journey north, and conclude with a stop at Busselton, where you will have a chance to view the iconic Busselton Jetty, before we depart back for Perth, arriving at approximately 8:30pm.

***This tour commences from September 2024.**

Note: Passengers will not have time on this tour to travel down Busselton Jetty. Please wear comfortable walking shoes, bring a water bottle, a hat, sunscreen and your camera. During the winter months, suitable wet weather clothing, footwear and an umbrella recommended.

THE PINNACLES & LANCELIN



Pinnacles, Koalas, Sand Boarding & 4WD

Departs: Daily 8:00am
Distance: 500km

Returns: 7:30pm
Duration: 11.5 hrs

Prices	Tour Code	Adult	Concession	Child
01/04/2024-31/03/2025	P3	\$245	\$220	\$138

Tour Itinerary



Caversham Wildlife Park

Stop off at Caversham Wildlife Park in the Swan Valley to view and take pictures with koalas and wombats as well as having the opportunity to hand feed the kangaroos.

Lancelin Sand Dunes

The highlight of the tour involves 4-wheel driving over the vast sand dunes of Lancelin in custom built vehicles unique to Australian Pinnacle Tours. This is followed by the thrilling experience of downhill sand boarding over these constantly moving dunes.



Cervantes Fishing Town

We travel along quiet back roads to the lobster fishing town of Cervantes. Once here, enjoy a behind-the-scenes factory tour to see the processing of Western Australia Rock Lobster, followed by a fish and chips lunch or upgrade to half a grilled lobster! (Cost supplement applies)



Nambung National Park

Visit the mystical Pinnacles Desert for an easy paced walk through the fascinating landscape, giving you the opportunity to embrace this captivating place. If time permits make a visit to the Pinnacles Desert Discovery Centre to learn more about the cultural and natural heritage of the area.

Return to Perth along the Indian Ocean Drive, arriving at approximately 7:30pm.

Tip! Gourmet up your experience and upgrade to the Lobster Lunch for just \$30 per person. Enquire when booking.

Note: Due to soft sand dunes delays may occur. Tour is not suitable for pregnant women, people with back problems or children under 4 years. Please advise of any dietary requirements at the time of booking. Lobster factory subject to fishing seasonality.

Pinnacles, Lancelin & Sand Boarding

Departs: Daily 8:00am
Distance: 400km

Returns: 6:00pm
Duration: 10 hrs

Prices	Tour Code	Adult	Concession	Child
01/04/2024-31/03/2025	PDE	\$199	\$185	\$110

Tour Itinerary



Hillarys Boat Harbour

Your adventure tour begins at the iconic Sorrento Quay Hillarys Boat Harbour. Whilst here, be sure to explore the stunning marina, shop for souvenirs and enjoy morning tea at one of the local eateries (own expense).



Lancelin Sand Dunes

Departing the marina, we travel on to the Lancelin sand dunes and experience the thrill of downhill sand boarding on the pristine white dunes. This is followed by an included fish and chips lunch at the Lancelin Beach Hotel.

Then it's onwards to the panoramic Lancelin Beach for a scenic stroll, or alternatively, take the opportunity for a quick swim.

Nambung National Park

Next we travel to the iconic Nambung National Park, near the town of Cervantes, for a guided easy paced walk through the mystical Pinnacles Desert - a truly iconic Western Australian landscape.

Discover the moon-like sandscape of these fascinating limestone formations. If time permits, be sure to make a visit to the Pinnacles Desert Discovery Centre to learn more about the Pinnacles and the cultural and natural heritage of the area.



Return to Perth along the Indian Ocean Drive, arriving at approximately 6:00pm.

Note: Please wear comfortable walking shoes, bring a hat and your camera. Hotel drop off is not included. There is a centralised drop off at the Barrack St Jetty. Please advise of any dietary requirements at the time of booking.



Pinnacles, Yanchep & Swan Valley

Departs: Tue, Fri, Sat 8:00am
Distance: 400km

Returns: 6:00pm
Duration: 10 hrs

Prices	Tour Code	Adult	Concession	Child
01/04/2024-31/03/2025	PIN	\$215	\$194	\$120

Tour Itinerary



Yanchep National Park

We head north away from the city towards Yanchep National Park for a quick comfort stop and an opportunity to see the koalas and kangaroos.



Nambung National Park

Then it's onwards to Nambung National Park to see the mystical Pinnacles Desert for an easy paced walk through the fascinating landscape, giving you the opportunity to really embrace this amazing and mystical place.

Lobster Shack at Cervantes

Following the highlight visit to the Pinnacles, it's on to the lobster town of Cervantes. Once here, enjoy a behind-the-scenes factory tour on the processing of Western Australia Rock Lobster, followed by your included fish and chip lunch or half a grilled lobster upgraded option! (Cost supplement applies)



Swan Valley

After lunch we head back down towards Perth to visit the iconic Swan Valley to sample some of the region's famed providores offering such delights as chocolate, nougat and gourmet nuts.

Return to Perth down Guildford Road arriving at approximately 6:00pm

Tip! Gourmet up your experience and upgrade to the Lobster Lunch for just \$30 per person. Enquire when booking.

Note: Please wear comfortable walking shoes, bring a water bottle, a hat, sunscreen and your camera. During the winter months suitable wet weather clothing, footwear and an umbrella recommended. Optional lobster lunch upgrade is at an additional cost. Please advise of any dietary requirements.

Pinnacles, Sunset & Night-time Stargazing

Departs: Mon, Wed, Thu, Fri, Sun 2:00pm
Distance: 500km

Returns: 11:00pm
Duration: 8 hrs

Prices	Tour Code	Adult	Concession	Child
01/04/2024-31/03/2025	PSG	\$215	\$194	\$120

Tour Itinerary



Yanchep National Park

We head north away from the city towards Yanchep National Park for an opportunity to see the koalas and kangaroos and a quick comfort stop.



Nambung National Park

From here we head up the coast towards the magical Pinnacles Desert to view the mystical limestone rock formations. Arriving late afternoon allows for breathtaking sunsets. Experience the moon-like landscape come to life as the sun sets over the Indian Ocean and the moon rises.

Cervantes Fishing Town

Once darkness falls, we head to the fishing town of Cervantes for our included dinner in a traditional Western Australian venue to soak up a real Australian atmosphere before heading out into the night to experience the night sky.



Stargazing

We head back into the Pinnacles Desert to experience the tranquility of the national park and to view the night sky without light pollution.

Return to Perth arriving at approximately 11:00pm.

Tip! Bring a pair of binoculars and download your favourite stargazing app on your phone to enhance your experience on this tour.

Note: This is a relaxed sightseeing tour rather than a professional astronomy based expedition. Please wear comfortable walking shoes, bring a jumper and your camera. Tour duration may be shortened due to inclement or extreme weather. Sunset and stargazing cannot be guaranteed due to bad weather and exact viewing times will change due to seasonal variations. Please advise of any dietary requirements. Limited hotel pick ups are available, please enquire at time of booking. Due to safety and passenger welfare requirements, the stargazing component of this tour may be conducted near the tour vehicle.

THE PINNACLES



Pinnacles & New Norcia Benedictine History

Departs: Mon Aug - May, Mon, Thu Aug - Nov 8:00am **Returns:** 7:00pm
Distance: 500km **Duration:** 11 hrs

Prices	Tour Code	Adult	Concession	Child
01/04/2024-31/03/2025	NN-P	\$245	\$220	\$138

Tour Itinerary



New Norcia

Travelling through the Swan Valley we arrive at New Norcia, home to Australia's only Benedictine Abbey. A little piece of Spain comes alive in this town, full of history, art and architecture. Learn about the local history before viewing the chapel and museum artifacts gifted to the monastery by Popes and the Royalty of Spain.



Benedictine Community

Visit the famous Benedictine Community with a guided tour of the town and main sites, including the museum and art gallery where you will find extraordinary artifacts dating back to when New Norcia was an Aboriginal mission.

Abbey Church

Next we move on to the Abbey Church, home to one of only two large Moser organs, originally crafted in Germany. This is followed by a visit to St Gertrude's College, a grand Gothic style building, which was originally built as a girls' boarding school and opened in 1908.



We then visit the produce shop selling olive oil, fruit, wine, New Norcia nut cake and breads, before enjoying a delicious lunch.

Nambung National Park

We then continue on to Nambung National Park for an easy paced walk through the mystical Pinnacles Desert. If time permits make a visit to the Pinnacles Desert Discovery Centre.

Return to Perth along the Indian Ocean Drive, arriving at approximately 7:00pm.

Note: Profusion of natural wildflowers depends on weather and other conditions, therefore we cannot guarantee sightings. Wear comfortable walking shoes, bring a hat and your camera. Please advise of dietary requirements at time of booking.

Pinnacles & Rottnest Sightseeing Package

Departs: Daily
Distance: Various

Returns: Various
Duration: Various

Prices	Tour Code	Adult	Concession	Child
01/04/2024-31/03/2025	P3RFF	\$309	\$285	\$170

Tour Itinerary



Save with our fantastic Pinnacles and Rottnest Sightseeing Package, with 2-days showcasing the best WA has to offer.



Pinnacles 4WD Sand Dunes & Sandboarding

This fabulous day out explores the world-renowned Pinnacles Desert. Other highlights include off-road driving, sandboarding, feeding kangaroos and photographing koalas, with an optional lobster lunch upgrade.

Locations Visited:

- Caversham Wildlife Park
- Cervantes Lobster Shack
- Pinnacles Desert
- Lancelin Sand Dunes

Rottnest Day Same Return Ferry (via Hillarys)

Experience Rottnest with a lightning fast 40-minute ocean crossing in air-conditioned comfort on board a high-speed ferry. Board your return departure from Hillarys Boat Harbour with Rottnest Fast Ferries, and travel to WA's most beautiful island. No matter how you spend your time at Rottnest, you are sure to be amazed by what the island has to offer. Return late afternoon to Hillarys Boat Harbour.



- Return same day ferry departure from Hillarys Boat Harbour
- Complimentary hotel pick up and drop off service from central Perth accommodation.

Note: Due to soft sand dunes, delays may occur. Pinnacles 4WD tour is not suitable for pregnant women, people with back problems or children under 4 years old. Please advise of any dietary requirements at the time of booking. Lobster factory subject to fishing seasonality. Ferry operated by Rottnest Fast Ferries, operates on a reduced service June-August.

LANCELIN



4WD Sand Dunes & Sand Boarding

Departs: Daily 10:00am, 11:00am, 12:00am, 1:00pm, 2:00pm
Duration: 45 mins

Prices	Tour Code	Adult	Concession	Child
01/04/2024-31/03/2025	4WDLAN	\$35	\$30	\$25

Tour Itinerary



Lancelin Sand Dunes

The towering white sand dunes of Lancelin lie around a 1.5-hour drive north of Perth, along the Indian Ocean coast. This tour is ideal for adventurous travellers short on time. Make your own way to Lancelin and hop aboard for a thrilling 45-minute 4WD tour of the dunes.



4WD Sand Dunes Experience

Head deep into the vast expanse of the off-road area, with 30-minutes of 4WD fun traversing some of the most amazing sand dunes in Western Australia. Enjoy short stops along the way to admire the views and take photos with the crystal-clear waters of the Indian Ocean as your backdrop.



Sand Boarding

Have a go at sand boarding down the gigantic dunes, seeing them up close with a 15-minute adrenaline-fueled experience. Look out over the spectacular views from up top before taking your thrilling sand board trip down, in an experience like no other.

Please note – This tour does require a moderate level of fitness, as climbing the dunes can be exerting.

Choice of departure times throughout the day. This tour activity departs from Lancelin Sand Dunes, Beacon Rd, Lancelin WA 6044.

Note: Please wear comfortable walking shoes, bring a water bottle, a hat, sunscreen and your camera. During the winter months suitable wet weather clothing, footwear and an umbrella recommended. Due to soft sand dunes delays may occur. Tour is not suitable for pregnant women, people with back problems or children under 4 years.

WAVE ROCK



Wave Rock, York, Aboriginal Culture

Departs: Tue, Wed, Fri, Sun 8:00am
Distance: 700km

Returns: 8:30pm
Duration: 12.5 hrs

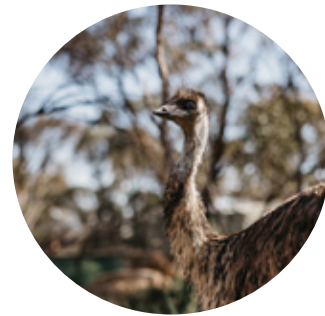
Prices	Tour Code	Adult	Concession	Child
01/04/2024-31/03/2025	WR	\$245	\$220	\$138

Tour Itinerary



York

Leaving Perth we head through the Perth Hills and escarpment to enter farming country. Heading east, we enjoy morning tea (own expense) at historic York, the first township founded in the Avon Valley.



From there we travel the Wheatbelt Highway through the agricultural towns of Corrigin and Kondinin. As we drive through the rolling farmlands, get a glimpse of Australian country life.

Dog Cemetery

We then drive past the infamous Dog Cemetery, a shrine to man's best friend and an integral part of farming life.

Hyden

Travelling on to the wildflower shop in Hyden, we break for an Aussie country style lunch. Whilst here, visit the wildlife park, view a unique antique lace collection – even featuring lace from Lady Diana's wedding dress – or visit the amazing toy soldier museum.

Wave Rock

Then we move on to see the spectacular prehistoric rock formation of Wave Rock and sacred Aboriginal sites. Leaving Wave Rock, we visit Hippo's Yawn and Mulka's Cave.



We return to Perth with a stop at a remote country town for a light afternoon tea and snack (own expense) arriving approximately at 8:30pm.

Note: Profusion of natural wildflowers depends on weather and other conditions, therefore we cannot guarantee sightings. Wear comfortable walking shoes, bring a hat and your camera. Please advise of any dietary requirements at time of booking.

PENGUIN ISLAND & CAVERSHAM



Penguin Island, Dolphins & Caversham

Departs: Wed, Sat 8:00am
Distance: 150km

Returns: 5:30pm
Duration: 9.5 hrs

Prices	Tour Code	Adult	Concession	Child
01/04/2024-31/03/2025	ET-PIC	\$225	\$194	\$120

Tour Itinerary



Penguin Island

Travel south from Perth to Rockingham where we board a glass-bottom boat cruise to showcase the spectacular coastlines of Penguin, Seal and Bird Islands, with opportunities to see wild dolphins, rare Australian sea lions, pelican rookeries and birds of prey. After this scenic cruise enjoy a wildlife walk of Penguin Island, where your guide can provide insights about the local penguins, landscapes and history of the island itself.



Rockingham

Return to the mainland on board the Penguin Island ferry for free time on the Rockingham waterfront, with your included fish and chips lunch. Take a stroll down to the foreshore or browse the souvenirs in the local shops.



Caversham Wildlife Park

We depart Rockingham and travel to Caversham Wildlife Park in the Swan Valley, where you will get to experience the Wildlife Park Farm Show, showcasing many of the animals at the park, before enjoying free time to explore and see the full range of native wildlife, with an opportunity to hand feed the kangaroos.



Return to Perth arriving at approximately 5:30pm, where our driver will drop you back to your pick up location.

***This tour commences from September 2024.**

Note: Please wear comfortable walking shoes, bring a water bottle, a hat, sunscreen and your camera. During the winter months, suitable wet weather clothing, footwear and an umbrella recommended. Ferry operation cannot be guaranteed due to extreme or bad weather. Please advise of any dietary requirements at time of booking.

WHALE WATCHING



Hillarys Boat Harbour Whale Watching

Departs: Mon, Wed, Thur, Fri, Sat, Sun 12:30pm (Late Aug - Dec)
Duration: 2 hrs

Returns: 2:30pm

Prices	Tour Code	Adult	Concession	Child
01/04/2024-31/03/2025	RFF-WWH	\$75	\$65	\$40

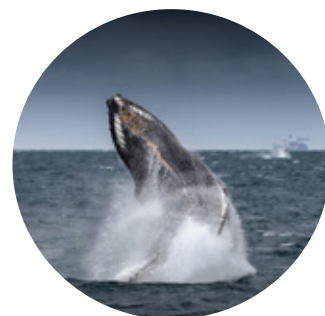
Tour Itinerary



Hillarys Boat Harbour

Witness the annual southern migration of the humpback whales on a scenic 2-hour whale watching cruise, departing from the tourism precinct of Hillarys Boat Harbour.

Experience the thrill of coming face-to-face with the majestic whales, which can be sighted frolicking in the waves off the sunset coast.



Educational Commentary

We are the only Western Australian whale watching operator, to offer live and educational commentary from a marine scientist sourced from AQWA (The Aquarium of Western Australia).

Our Vessels

Get up close to the magnificent marine mammals aboard our air-conditioned, state-of-the-art vessel and save precious time over slower vessels. Enjoy the best possible view of the majestic whales from one of three viewing decks.



Take advantage of the large, open deck spaces to capture spectacular close up photographs.

Complimentary hotel pick up and drop off service from central Perth accommodation available.



Note: If on any tour, whales are not sighted, passengers are entitled to join again free of charge, travelling within the same whale season.

ROTTNEST ISLAND FERRIES



Rottnest Island Ferry Departure Points

Departs: Daily from 7:00am
Duration: Various

Returns: Various 

Tip! Ferry transfers can be included and packaged into all tours. Prices vary depending on departure point and date of travel. Enquire when booking.

Prices 01/04/2024-31/03/2025	Adult	Concession	Child
Hillarys Boat Harbour	From \$90	From \$85	From \$53
Fremantle	From \$84	From \$74	From \$45
Perth	From \$124	From \$114	From \$68

Hillarys Boat Harbour

North of Perth, Hillarys Boat Harbour is home to the Aquarium of Western Australia, quaint shops and many restaurants. A free connecting courtesy shuttle, from Perth to the departure dock, is available upon request. As a secondary departure point, parking is quieter and easier.

Ferry Operator: Rottnest Fast Ferries

Fremantle

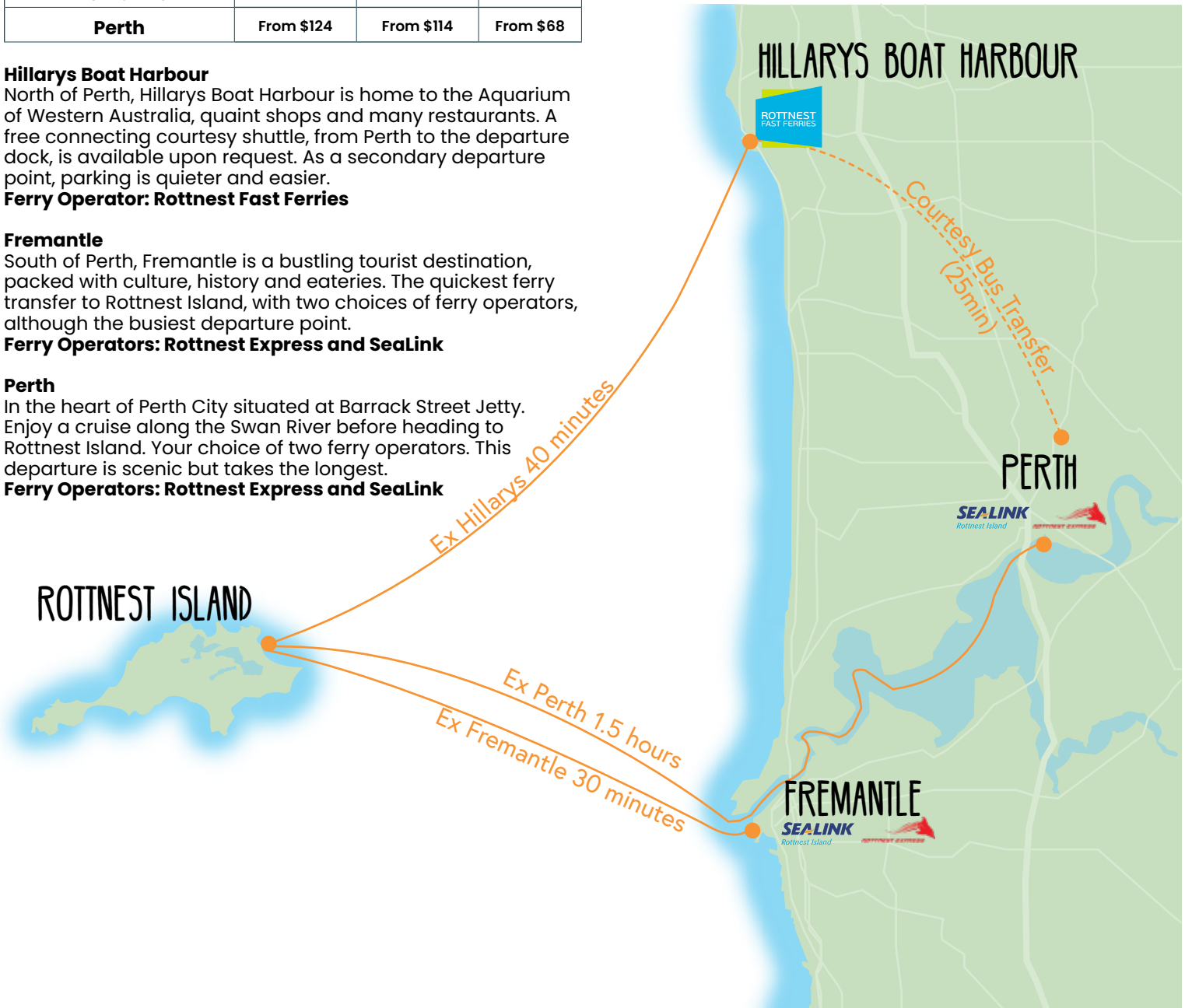
South of Perth, Fremantle is a bustling tourist destination, packed with culture, history and eateries. The quickest ferry transfer to Rottnest Island, with two choices of ferry operators, although the busiest departure point.

Ferry Operators: Rottnest Express and Sealink

Perth

In the heart of Perth City situated at Barrack Street Jetty. Enjoy a cruise along the Swan River before heading to Rottnest Island. Your choice of two ferry operators. This departure is scenic but takes the longest.

Ferry Operators: Rottnest Express and Sealink



ROTTNEST ISLAND



Train and Tunnel Tour

Departs: Daily 10:30am, 11:30am, 12:30pm, 1:30pm **Returns:** Various
Distance: Various **Duration:** 2 hrs

Prices	Tour Code	Adult	Concession	Child
01/04/2024-31/03/2025	OHTT	\$40	\$35	\$20

Tour Itinerary



Rottneet's WWII guns and tunnels commemorate both its military history and our soldiers who fought to defend the shores of Western Australia. Rottneet Island was a crucial part of defending WA during WWII, being a key protector to the Fremantle port.



Captain Hussey Train

Begin this tour with a unique 30-minute historic train ride, passing some iconic and historical landmarks on the island. Journey to the historical Oliver Hill guns and tunnel fortification on board the unique 64-seat Captain Hussey trolley train.

Oliver Hill Guns & Tunnels

Upon arriving at Oliver Hill, be taken on a 1-hour guided tour through the stunning tunnel system that once played a crucial role in Australia's military defence in World War II. See how the soldiers worked in these intricate tunnels as you are guided through their day-to-day life.



The island was home to intricate WWII secret tunnels and housed 9.2-inch guns to protect against invading Axis forces. Post war, the 9.2-inch battery was saved from disposal due to the high cost of removal and shipping of the guns to the mainland. This led to the preservation of the military artifacts.

Return back to the main settlement train station on the Captain Hussey train.

Note: Please wear comfortable walking shoes, bring a hat and your camera. All entry fees are included within the ticket price. This tour departs Rottneet Island and ferry transport is not included in the itinerary or pricing. This tour involves walking up and down multiple stairs. All tours depart from the main settlement train station. Operated by Quokka Coaches.

The Best of Rotto Package

Departs: Daily 10:00am **Returns:** Various
Distance: Various **Duration:** 6.5 hrs

Prices	Tour Code	Adult	Concession	Child
01/04/2024-31/03/2025	RFF-BOR	\$150	\$147	\$99

Tour Itinerary



The ultimate package to enjoy Rotto how the locals do.

Hillarys Boat Harbour

Travel across to Rottneet with day return ferry departures from Hillarys Boat Harbour, including a complimentary hotel pickup service. Take a lightning-fast-40-minute ocean crossing to the island, with coffee available on board.



Rottneet Island

Explore Rottneet's beaches and bays on custom built bikes, accessing any of the 63 beaches that the island has to offer. A cycling map of three local trails is provided, to help you find your way around.

Enjoy your included 'Cray Dog' at The Lane, a delicious burger stuffed with Western Rock Lobster, and end the day with a scoop of Simmo's Ice Cream, choosing from over 60 flavours. This local WA ice creamery was recently voted one of the Top 15 ice creameries in the world by USA Today.



Cruise back to Hillarys in the afternoon, to enjoy the cafés and restaurants at Hillarys Boat Harbour or take your complimentary shuttle back to your pickup point in the Perth CBD.



Note: Please wear comfortable walking shoes, bring a water bottle, a hat, sunscreen and your camera. Tour is not suitable for infants.



Bayseeker Island Tour

Departs: Daily 11:15am, 1:45pm (reduced service May-Aug)
Returns: 1:00pm, 3:30pm **Duration:** 1.75 hrs

Prices	Tour Code	Adult	Concession	Child
01/04/2024-31/03/2025	BIT	\$50	\$45	\$30

Tour Itinerary



Appreciate all the colours of Rottnest on the fully commented Bayseeker Island tour.

All major habitats are covered on this amazing tour, as well as Rottnest's cultural and historical heritage ranging from maritime, colonial and military history to future developments.

Throughout the tour learn about the shipwreck and maritime history of the island; such as the Henrietta Rocks, home to the 'Shark' (a hopper barge that wrecked in 1939) the seventh vessel Rottnest Island has claimed.

Wadjemup Lighthouse

See the iconic lighthouse and learn about the Noongar history. The original Wadjemup lighthouse was Western Australia's first lighthouse, it then became Australia's first rotating beam lighthouse after its conversion in 1881.

Mabel Cove

Take in the majestic lookout at Mabel Cove, with spectacular views over the ocean and the famous 'Crocodile Rock'.



Note: Please wear comfortable walking shoes, bring a hat and your camera. This tour departs Rottnest Island and ferry transport is not included in the itinerary or pricing. Tour departs and returns to the main settlement's bus stop. Operated by Quokka Coaches.

Grand Island Tour

Departs: Daily 11:30am
Returns: 3:15pm
Distance: Various **Duration:** 3.75 hrs

Prices	Tour Code	Adult	Concession	Child
01/04/2024-31/03/2025	GIT	\$99	\$90	\$60

Tour Itinerary



This fascinating tour takes in all of Rottnest's must-see locations and cultural and historical heritage, ranging from maritime and military history to future developments. A light sandwich lunch is also included on this tour. Following lunch taken up at Oliver Hill, join your air-conditioned coach for a tour of the island.

Captain Hussey Train

Begin this tour with a unique 30-minute historic train ride. Journey to the historical Oliver Hill guns and tunnel fortification on board the unique 64-seat Captain Hussey trolley train.

Oliver Hill Guns & Tunnels

Join a 1-hour guided tour of the stunning tunnel system that once played a crucial role in Australia's military defence in World War II.

Learn about shipwrecks and maritime history. With 12 vessels claimed since 1842, the Henrietta Rocks is home to the 'Shark' - a hopper barge wrecked in 1939.

Wadjemup Lighthouse

See the iconic lighthouse and learn about Noongar history. The original Wadjemup lighthouse was Western Australia's first lighthouse.

Mabel Cove

Take in the majestic lookout at Mabel Cove, with spectacular views over the ocean and the famous 'Crocodile Rock'.



Note: Please wear comfortable walking shoes, bring a hat and your camera. All entry fees are included within the ticket price. This tour departs Rottnest Island and ferry transport is not included in the itinerary or pricing. Please advise of any dietary requirements. This tour involves walking up and down multiple stairs. Tour departs from the Rottnest Island main settlement train station. Operated by Quokka Coaches.

ISLAND EXPLORER



Island Explorer Bus

Departs: Daily, Various
Distance: Various

Returns: Various
Duration: Various

Prices 01/04/2024-31/03/2025	Tour Code	Adult	Concession	Child
Island Explorer	IE	\$30	\$22	\$22
Accommodation Shuttle	AS	\$3	\$3	\$3

Island Explorer Bus

Upgrade your island experience and enjoy the beauty of Rottneest Island at your own pace with the hop-on, hop-off Island Explorer shuttle bus. **The Island Explorer is NOT a tour, the bus driver does not provide commentary.**

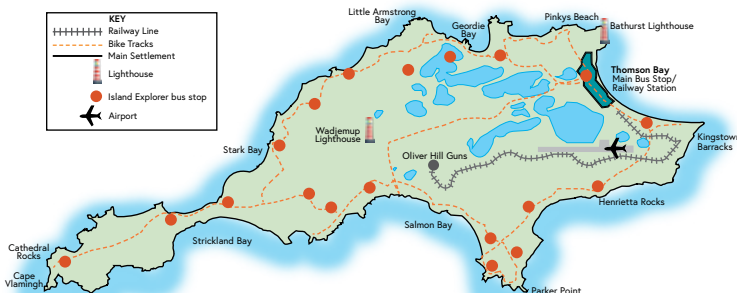
A cheaper and faster alternative to cycling, the Island Explorer is a flexible way to explore the island. Hop on and off at any location throughout the day. As a hop-on, hop-off service a seat is not always guaranteed and you may need to stand. **Please note: During peak periods, the bus might be full and you may have to wait for the next bus.**



Accommodation Shuttle Bus

The convenient accommodation shuttle on the island currently operates 7 days a week from the main bus stop, stopping at Kingstown and Geordie Bay.

Tip! Scan the QR code to view our latest Island Explorer and accommodation shuttle bus timetables.



QUOKKA HOPPER



Quokka Hopper

Departs: 6:30pm - 9:30pm (Monday - Sunday)
7:30pm - 9:30pm (Friday - Sunday)

Duration: Various

Prices 01/04/2024-31/03/2025	Options	Transfer Price
	Zone 1	\$25
	Zone 2	\$35

Zone Transfer

Travel around the Rottneest Island settlement area in style. The Quokka Hopper is a seven-seater electric cart transfer service. We offer one-way transfers, available on demand.

Our service will pick you up and drop you off at 12 designated stops in the island's main area, or in front of your accommodation.

Stop Number	Stop Location	Pricing Zone
1	Main Bus Stop	Zone 1
2	Dome	Zone 1
3	Visitors Centre (restricted mobility only)	Zone 1
4	Samphire	Zone 1
5	South Thomson	Zone 1
6	Airport	Zone 1
7	Kingstown Barracks	Zone 2
8	Country Club	Zone 1
9	Caroline Thomson	Zone 1
10	Discovery Parks	Zone 1
11	The Basin	Zone 1
12	Geordie Bay	Zone 2

Private Chauffeur Service

A private chauffeur service is also available, in 1 and 2 hour blocks, allowing you an exclusive opportunity to explore the highlights of Rottneest at your own pace.

Departs: 8:00am - 10:00pm

Prices 01/04/2024-31/03/2025	Options	Private Chauffeur Price
	30 Mins	\$125
	1 Hour	\$165
	2 Hours	\$275

Note: The Quokka Hopper holds 7 passengers or 5 passengers with luggage. Credit Card payment only, no split billing. Passengers pay upon arrival. Due to restrictions on electric carts, the Quokka Hopper can only operate east of the Wadjemup Lighthouse. It is not able to access the locations such as the West End or Strickland Bay. **To book the Quokka Hopper for Private Hire Chauffeur Service, please contact Quokka Coaches on Rottneest Island at operations@quokkacoaches.com.au or same day bookings on (+61) 0498 939 995**

🇯🇵 日本語ガイド付き
ロットネスト島 1日ツアー



Omakase - Rottnest Package

催行日: 毎日 10am

ホテル到着時間: 6pm~
ツアー所要時間: 7時間半

Prices	Tour Code	Adult	Child
01/04/2024-31/03/2025	RFF-OMA-LC	\$299	\$175

Tour Itinerary



お洒落なハーバーから大型フェリーで快適なクルーズ
お洒落なショッピングモールと隣接した観光スポット「ヒラリーズポートハーバー」から発着する大型フェリーをご利用頂き、ロットネスト島まで約40分のインド洋クルーズをお楽しみください。パース市内からヒラリーズポートハーバーまでのアクセスは無料の送迎バスご利用ください。

経験豊かなガイドと一緒にロットネスト島へ

ロットネスト島に到着後は、90分の観光バスツアーに参加頂きます。エメラルドグリーンの海や純白の砂浜、島の中心にそびえる灯台などをご覧いただけます。バスツアー終了後は島内のカフェでランチをお召し頂き、日本語ガイドと一緒にクオッカ 散策をお楽しみ頂きます。

「世界一 幸せな動物」と呼ばれるクオッカとのふれあい

オーストラリアにしか生息しない有袋類の中で、新たな人気者となったクオッカと出会うスポットをご案内。ロットネスト島は野生のクオッカと間近でふれあうことができる唯一の場所。笑顔が可愛く、小さく飛び跳ねる姿はとてもキュートなクオッカの生態やふれあい方についてガイドが説明を行います。

充実のおまかせツアー

クオッカ散策終了後には帰路のフェリー出発まで、島内のショッピングモールでお土産などをお求め頂くための自由時間も設けております。ヒラリーズポートハーバーに到着後は、無料の送迎サービスを利用頂きパース市内までもどることができます。



ご予約・お問い合わせ

注意事項: 歩きやすい服装や靴でご参加下さい。一年中日差しが強いので帽子やサングラス、日焼け止めをご利用頂いた方が便利です。水分補給が出来る場所も限られているため、ウォーターボトルや水筒をご持参下さい。



🇯🇵 日本語ガイド付き
ピナクルズ 1日ツアー



Omakase - Pinnacles Package

催行日: 月・火・水・土・日 8am
移動距離: 500km

ホテル到着時間: 7:30pm
ツアー所要時間: 11時間半

Prices	Tour Code	Adult	Child
01/04/2024-31/03/2025	P3-OMA	\$299	\$175

Tour Itinerary



人気のカバシャムワイルドライフパークを開園前に訪問

スワンバレー地区にある人気の動物園「カバシャムワイルドライフパーク」に向かいます。一般来場者への開園前に特別に入園ができ、オーストラリアにか生息していないコアラやウォンバットとの記念撮影。また、カンガルーの餌付けなど体験することができます。



ランセリン砂丘

パース市内から北へ約130km。真っ白い砂が一面に広がるランセリン砂丘にて、特別仕様の四輪駆動車で砂丘を巡るアドベンチャーバスツアーと、サンドボーディング体験をお楽しみ頂けます。砂丘の頂からは純白の砂浜の奥に輝くインド洋の美しい海と、パース特有の青空のコントラストをお楽しみいただけます。



セルバンテス・ロブスターシャック

ウェスタンロックロブスター(伊勢エビ)で有名な漁師町「セルバンテス」のロブスターシャックで、活きているロブスターの生産作業をご覧いただける工場見学ツアーお楽しみ頂けます。ツアー終了後は、隣接するレストランにてフィッシュアンドチップス又はロブスターランチをお楽しみ下さい。(ロブスターランチは追加代金が別途必要です)

ナンバング国立公園

「荒野の墓標」とも呼ばれる奇岩群ピナクルズがある、ナンバング国立公園を訪れます。長い年月を経て創られた大自然のアート、地球外の惑星を訪れているような幻想的な景色をご覧いただけます。知識豊富なガイドがピナクルズの歴史や自然について解説いたします

ロブスターランチはツアー代金と別に \$30 / お一人様の追加代金が必要です。


注意事項: 歩きやすい服装や靴でご参加下さい。当日の天候によってツアー行程が急遽変更となる可能性がございます。このツアーはご妊娠中のお客様、背中や首などに痛みや疾患があるお客様には適しておりません。4歳以下のお子様は4WD体験はご利用頂けません。アレルギーや何か食事制限をお持ちの方はツアーお申込時にお知らせ下さい。

4 DAY SOUTH WEST GETAWAY



Albany, ANZAC, Valley of the Giants & Margaret River Region

Prices	Tour Code	Adult	Concession	Child
01/04/2024-31/03/2025	4DSW	\$1449	\$1399	\$1249

Departs: Selected Mon, 8:00am (see dates below) 
Returns: 7:00pm on Day 4 of the Tour
Distance: 1500km



Day 1 Perth to Albany

As we travel south towards Albany and the South Coast, we encounter the Stirling Ranges, one of the only major mountain ranges in the southern half of Western Australia. We continue through the Porongurups and stop for a winery lunch with included wine tasting.

We travel south to Mount Clarence and the ANZAC Memorial Centre in Albany. Immerse yourself in the ANZAC legend while taking a self-guided tour. Enjoy a scenic drive along the rugged coastline with an early evening check-in at your accommodation.

Accommodation: Dog Rock Hotel, Albany or similar. (LD)



Day 2 Albany to Pemberton

After breakfast, enjoy coastal sightseeing, visiting The Gap and Natural Bridge. Next we head to the famous Whaleworld Interpretation Centre for a quick self-guided tour.

Next stop is the Valley of the Giants Tree Top Walk, which reaches 40 metres high into the forest canopy.

Travelling west to the coastal resort town of Walpole, we join our local guide for a cruise on the Nornalup Inlet*. Afterwards, head north-west to the Pemberton region for check-in at your accommodation.

Accommodation: Karri Valley Resort, Pemberton or similar. (BLD)



Day 3 Pemberton to Margaret River

Early morning, take a short stroll to the majestic Beedelup Falls. Travelling north-west through the stunning Blackwood Forest we arrive at Augusta. Here we visit Cape Leeuwin Lighthouse, where the Indian and Great Southern Oceans meet.

After lunch we travel through Boranup Forest to Mammoth Cave for a guided tour, before driving into the township of Margaret River where you will have some time to visit the quaint shops on the main street. We then pay a visit to Busselton Jetty, the longest wooden jetty in the southern hemisphere, before a late afternoon check-in at your accommodation.

Accommodation: Abbey Beach Resort, Busselton or similar. (BLD)



Day 4 Margaret River to Perth

After breakfast we travel to the quaint town of Cowaramup, famous for its numerous cow statues.

We explore local chocolate and gourmet produce factories (time permitting) to enjoy some of their samples as well as taste some of the locally produced wine. We then stop for a delicious lunch, and a beer tasting at a local brewery.

Following lunch, we head to the dramatic coastline at Canal Rocks, a beautiful granite outcrop where the ocean has created natural canals. A leisurely drive back to Perth allows for an early evening arrival. (BL)

2024/25 Departure Dates (Monday):

15/04/24	06/05/24	20/05/24	02/09/24	16/09/24
30/09/24	07/10/24	14/10/24	21/10/24	04/11/24
18/11/24	03/02/25	17/02/25	17/03/25	31/03/25

Note: Prices are based on twin share. *When cruise is not running, an alternative attraction will be provided.

2 DAY MARGARET RIVER



2 Day Margaret River Region Food & Wine Lovers Tour

Prices 01/04/2024-31/03/2025	Tour Code	Adult	Concession	Child
Abbey Beach Resort (4 meals)	2DMRF-ABR	\$845	\$799	\$625
Margaret's in Town (2 meals)	2DMRF-MRA	\$845	\$799	\$625
Stay Margaret River (4 meals)	2DMRF-SMR	\$899	\$849	\$685

Day 1:

Departs: Mon, Thu, Fri 8:00am

Distance: 700km

Returns: 8:30pm on Day 2 of the Tour



Day 2:

Departs: 9:00am - 10:00am (Depending on hotel pick-up time)

Returns: 5:00pm at Margaret River, back to Perth at 8:30pm

Tour Itinerary - Day 1

Busselton Jetty

We travel south from Perth driving through farmland with grazing cattle and passing by the coastal towns. Arriving at Busselton, known as the gateway to the Margaret River region, we stop for morning tea (own expense) to view the iconic Busselton Jetty, the longest timber jetty in the Southern Hemisphere (please note there is not enough time at this stop to walk the full length of the jetty).



Local Brewery and Winery

Driving into the heart of the region, we head to one of Margaret River's boutique breweries for complimentary beer tastings and lunch. Before lunch, we sample some local wines.

Mammoth Cave

Next it's on to Mammoth Cave for a guided tour through the gothic cave with vast chambers that reveal fascinating information on the region's flora and fauna.

Cape Leeuwin Lighthouse

Continuing south, through the Boranup Forest of enormous Karri Trees we reach the most fascinating part of the region at Augusta. Here at Cape Leeuwin Lighthouse, marvel at the dividing point between the Southern and Indian Oceans - a rare phenomenon to view the meeting of two oceans. Then we head back to Margaret River township to check in to your selected hotel.



Tour Itinerary - Day 2

On the second day of your Margaret River experience, be taken on a unique gastronomic journey celebrating the Margaret River region's food and wine artisans. Collected from your selected accommodation after breakfast, The Food Lovers Tour gives the opportunity to savour wine tastings in a tranquil and intimate fashion at a range of remarkable boutique and 5-star wineries.



Features of the Food Lovers Tour include*:

- Tastings at boutique wineries.
- Sample local gourmet foods.
- A delicious winery lunch.
- Get a rare glimpse into the heart of these iconic boutique wineries with a guided tour through their stunning vineyards.
- Finish the day with behind-the-scenes chocolate and coffee tasting tours.

After an indulgent day sampling the very best of the Margaret River region, it's time to rejoin your coach captain for the drive back to Perth, arriving back to Perth at approximately 8:30pm.

*Inclusions are subject to variation at the operator's discretion.



Note: Prices are based on twin share. Overnight bag only due to limited storage capacity of vehicle. Winery may not be open on select public holidays. Please wear comfortable walking shoes, bring a water bottle, a hat, sunscreen and your camera. During the winter months suitable wet weather clothing, footwear and an umbrella recommended. Please advise of any dietary requirements.

西澳粉红湖自然之窗龙虾美食经典3日游

PINK LAKE KALBARRI PINNACLE 3 DAY TOUR (CHINESE)

Pink Lake Kalbarri Pinnacle 3 Day Tour (Chinese) 西澳粉红湖自然之窗龙虾美食经典3日游

Prices 01/04/2024-31/03/2025

套餐 A (Hospitality Inn Geraldton)	2晚	\$699 每人	单间补贴\$180
套餐B (Nesuto Geraldton Apartment Hotel)	2晚	\$899 每人	单间补贴\$220

Departs: 出发时间 - 星期四、星期日 - 上午8:00
Returns: 返回时间 - 星期六、星期二 - 下午5:00



Tour Itinerary - Day 1

第一天 - (珀斯 - 尖峰石阵 - 杰拉尔顿)

从珀斯出发，前往西澳大利亚珊瑚海岸的第一个地标，尖峰石阵，位于南邦国家公园内。在标志性的龙虾工厂享受一顿整只龙虾的午餐，并在怪树下留影。下午抵达杰拉尔顿，入住酒店休息。（含午餐）



Tour Itinerary - Day 3

第三天 - (杰拉尔顿 - 朱丽恩湾 - 兰瑟林 - 珀斯)

离开您的住宿，参观HMAS悉尼二号纪念碑，俯瞰杰拉尔顿的整个海岸线。然后我们前往朱丽恩湾，自理午餐以及在海滩边的时光。下午前往兰瑟林沙丘，州内最大的沙丘，参加独特的4WD和滑沙之旅。最后，沿着海岸线驾驶，大约于下午1700抵达珀斯，行程结束。

(含早餐)

Tour Itinerary - Day 2

第二天 - (杰拉尔顿 - 粉红湖 - 卡尔巴里国家公园)

前往粉红湖，抓住最佳光线为您的粉湖照片。沿着壮丽的红崖海岸，休息在卡尔巴里度假小镇。参观卡尔巴里国家公园；澳大利亚最大的国家公园，探索自然之窗和空中步道，欣赏80公里的默奇森河峡谷，然后返回杰拉尔顿度过夜晚。您还可以选择增加一个4WD星空摄影活动，晚上前往海边的沙丘拍摄星星照片（每人\$59.00，最低2名乘客，视天气而定。请在出发时咨询您的司机）。（含早餐）



请注意: 此旅行的每一天包含的餐食标有 (B = 早餐, L = 午餐)，其他餐食请自行准备。

Note: *Whilst the tour is operated in Chinese, basic information is also given in English, so adventurous travellers are welcome to join!

TERMS AND CONDITIONS

PRICES AND BROCHURE VALIDITY

Prices are quoted in Australian dollars (inclusive of GST). Tour prices are per person, are correct at time of publication and can be subject to change at the discretion of Australian Pinnacle Tours (Passenger Transport Services Pty Ltd). This brochure is valid for travel commencing 1 April 2024 until 31 March 2025.

INCLUSIONS

Tours and cruises include all sightseeing, entry fees and meals as stated in the full itinerary (which can be viewed at www.australianpinnacle.com.au), however are subject to change solely at the discretion of Australian Pinnacle Tours.

CONDITIONS OF TRAVEL

Australian Pinnacle Tours reserves the right to alter the route or itinerary of any of its tours and arrange alternative carriers to those advertised if necessary. No refunds will be given in these circumstances or in the event of any delay, curtailment or alteration of a trip resulting from any cause beyond our control, including but not limited to severe weather conditions. Components of trips are weather dependent and Australian Pinnacle Tours cannot be held liable if trip components are not available on the day of travel. Australian Pinnacle Tours can't guarantee pick-up or drop-off times and is not liable for passenger failure to connect with other services or any associated costs resulting from such delays. We accept no responsibility for loss or damage to personal belongings or baggage. The Aboriginal components of our tours are subject to cultural conditions. Participants may be absent due to cultural commitments with minimal prior notification and Australian Pinnacle Tours reserves the right to amend the itinerary in these circumstances with no obligation to refund.

LIABILITY

Whilst we make every effort to safeguard our passengers, Australian Pinnacle Tours cannot be held liable for any damage, injury, or loss of any kind caused by or resulting from any act or omission by its employees, agents or contractors. Passengers should note that adventure travel involves a higher than normal risk and a signed release may be required from all participants before departure. Australian Pinnacle Tours also assumes no responsibility for any act of negligence, act or omission whatsoever by any company whose services are used as part of packages provided, including but not limited to activity and accommodation providers.

MINIMUM NUMBERS/ITINERARIES

Tours require minimum passenger numbers to operate. In circumstances where minimum numbers are not reached, an alternative may be offered or a smaller vehicle used.

Fares effective for travel from 1 April 2024 until 31 March 2025.

TRAVEL INSURANCE

Travel insurance is not included. Australian Pinnacle Tours (Passenger Transport Services Australia Pty Ltd) strongly recommends that passengers take out their own travel insurance policy which covers personal liability, cancellation, loss of luggage and personal effects and specific COVID-19 insurance cover in the event of being unable to travel.

DEPARTURE POINTS

Pickup details will be advised at time of booking. Pickups are available on request at time of booking, from select Perth city hotels. Most tours also provide a free drop-off service. Refer to map on back page.

DIESEL FUEL LEVY

Australian Pinnacle Tours reserves the right to charge a fuel surcharge as a result of escalation in the price of crude oil.

CANCELLATION POLICY

Fees still apply for any COVID-19 related reason.

Due to the extensive organisation involved with touring, a strict cancellation fee will be applicable to compensate for costs and lost revenue. We strongly recommend you take out travel insurance to cover against such charges. Australian Pinnacle Tours is subject to the cancellation policies of all local suppliers used for some components on our tours. Any cancellation policies or fees from local suppliers will be required to be adhered to by clients of Australian Pinnacles Tours.

Once a booking is made the following cancellation fees will apply:

Day Tours and Short Break Adventures

25% deposit confirms tour with full payment required 30 days before departure

Cancellation Fees Day Tours

- +6 days prior to departure; no fee payable
- 5-3 days prior to departure; 50% of total price
- 2-0 days (48 hours) prior to departure; 100% of total price

Cancellation Fees Extended/Overnight Tours

- 30+ days prior to departure; 10% of total price
- 29-16 days prior to departure; 25% of total price
- 15-6 days prior to departure; 50% of total price
- 5-0 days prior to departure; 100% of total price

If you fail to join a tour or join it after departure, or leave it prior to its completion, no tour refund can be made. The above cancellation fees are in addition to fees which may be levied by accommodation properties, travel agents or third party tour and transport operator cancellation fees. Please note unique terms and conditions may apply to third party products, these are accessible via their respective websites.

Changes and Requirements

Tours may be cancelled and changed if required minimum numbers are not met. Minimum numbers for all tours are 8 adults. Please note that certain tours are not suitable for infants and children as stated. If a child is taken on tour, Australian Pinnacle Tours applies a separate seat cost for the tour. No child will sit with parent on the same seat due to coach and bus regulations in Western Australia (Infants aged 0-3 years excepted).

Amendment Fees Short Break Tours (Tours of 5 days or less in duration)

If you wish to transfer from one trip to another or transfer your booking to a third party you must notify us at least 30 days prior to the proposed departure date. A fee of AU\$100 per person per change may apply (in addition to any charges levied by hotels, ground operators). If you notify us less than 30 days prior to the proposed departure date the refund policy applicable to cancellations will apply. Transfers to a third party are only permitted where the transferee meets all the requirements in relation to the trip, and transfers to another departure can only be made to a departure within the current validity period.

Other Change/Amendment Fees for all Tours

Amendments to any other arrangements made in conjunction with your trip may incur an AU\$100 administration fee per booking per change. This fee is in addition to any charges levied by hotels, ground operators or airlines. No amendments are permitted to your booking within 7 days of departure. You are strongly advised to take out cancellation insurance at the time of booking which will cover cancellation fees. If you leave a trip for any reason after it has commenced we are not obliged to make any refunds for unused services.

Cancellation by Australian Pinnacle Tours

We may cancel a trip at any time up to 28 days before departure. We may cancel a trip at any time prior to departure if, due to terrorism, natural disasters, political instability or other external events it is not viable for us to operate the planned itinerary. If we cancel your trip, you can transfer amounts paid to an alternate departure date or alternatively receive a full refund. In circumstances where the cancellation is due to external events outside our reasonable control refunds will be less any unrecoverable costs. We are not responsible for any incidental expenses that you may have incurred as a result of your booking including but not limited to visas, vaccinations, travel insurance excess or non-refundable flights.

CHILD POLICY

Child fares are available on most tours for passengers aged between 4 and 12 years inclusive. Infants (0-3 yrs) are free when travelling with an adult, however touring is not generally recommended due to the large distances travelled. Depending on age, children on tour may be required to be seated in booster seats or other child safety accredited seating (supplied by the customer). At all times, Australian Pinnacle Tours reserves the right to not accept children on tours due to safety concerns.

CONCESSION FARES

Concession fares apply to holders of senior or pensioner cards and full-time students. Card membership numbers must be quoted at time of booking.

LUGGAGE ON TOUR – WHAT TO PACK

Due to the equipment required for tours, vehicles have limited luggage space remaining. We therefore ask passengers to limit baggage to a strict 15kg maximum and soft bags are preferred. We suggest you include the following essential items: non-slip walking shoes (sneakers), sunscreen, hat, beach towel, bathers, flashlight, camera and small bottle of water. We recommend that items of value, including electronic items, should not be carried on tour, and liability and risk is with the owner.

PHOTOGRAPHY

Images: © Tourism Western Australia

Page Footers: © Peter Farmer/Passenger Transport Services Pty Ltd

Page 11: © Rottneest Fast Ferries, Rottneest Express and Sealink

Some photos have been provided by various sources

RESERVATIONS PHONE: Australian Pinnacle Tours +61 8 6270 6060

Email: reservations@pinnacletraveltours.com.au

Website: www.australianpinnacletraveltours.com.au - Visa, AMEX and MasterCard accepted (surcharges apply).



COMPLIMENTARY HOTEL PICK UP Please be ready 10 minutes prior, pick ups may vary due to traffic.

PERTH CITY

Adina Barrack Plaza (from Kings Hotel)	7:30am
Adina Grand Apartments (from Parmelia Hilton Hotel)	7:20am
All Suites Perth (The Westin Hotel)	7:30am
Aurea Hotel (from Quest Mounts Bay Road)	7:30am
Bailey's Motel (from Mantra on Hay)	7:20am
Barrack Street Jetty Tourist Stop Pier 3	7:30am
Citadines (from Parmelia Hilton Hotel)	7:20am
Club Wyndham	7:15am
Comfort Inn and Suites Goodearth Hotel (from Pan Pacific Hotel)	7:20am
Como the Treasury (from Kings Hotel)	7:30am
Criterion Hotel (from Kings Hotel)	7:30am
Crown Perth (Taxi Rank at McDonalds)	7:45am
Crowne Plaza Perth	7:20am
Doubletree by Hilton Perth Waterfront (from Tourist Stop Barrack St Jetty Pier 3)	7:30am
Duxton Hotel Perth (from Pan Pacific)	7:20am
European Hotel (from Kings Hotel)	7:30am
Four Points by Sheraton	7:20am
Fraser Suites (from Mantra on Hay)	7:20am
Hotel Ibis Perth (from Holiday Inn City Centre)	7:20am
Holiday Inn City Centre	7:20am
Holiday Inn West Perth (from Club Wyndham)	7:15am
Hyatt Regency (from Crowne Plaza)	7:20am
Ibis Styles East Perth (from Crowne Plaza)	7:20am
Intercontinental Perth (from Holiday Inn City Centre)	7:20am
Kings Hotel Perth (cnr Hay & Pier St)	7:30am
Mantra on Hay	7:20am
Mercure Hotel Perth (from The Westin Hotel)	7:30am
Mercure on Hay (from The Westin Hotel)	7:30am
Metro Hotel Perth City (from Mantra on Hay)	7:20am

Mont Clare Apartments (from Mantra on Hay)	7:20am
Mountway Holiday Apartments (from Rendezvous Studio Hotel, Perth Central)	7:20am
Nesuto Mounts Bay Waters (from Quest Mounts Bay Road)	7:30am
Novotel Murray Street (from Holiday Inn City Centre)	7:20am
Novotel Perth Langley (from Pan Pacific)	7:20am
Pan Pacific	7:20am
Parmelia Hilton Perth	7:20am
Pensione Hotel Perth (from Kings Hotel)	7:30am
Perth City Apartment Hotel (from Four Points by Sheraton)	7:20am
Oaks Perth Hotel (from Holiday Inn City Centre)	7:20am
Quality Hotel Ambassador Perth (from Pan Pacific)	7:20am
QT Perth (from Kings Hotel)	7:30am
Quay Perth (from Tourist Stop Barrack St Jetty Pier 3)	7:30am
Quest East Perth (from Pan Pacific)	7:20am
Quest Kings Park (from Club Wyndham)	7:15am
Quest Mounts Bay Road (cnr Mounts Bay Rd & Cliff St)	7:30am
Quest West End (from Four Points by Sheraton)	7:20am
Rendezvous Studio Hotel Perth Central	7:20am
Ritz Carlton (from Tourist Stop Barrack St Jetty Pier 3)	7:30am
Riverview Apartments (from Rendezvous Studio Hotel, Perth Central)	7:20am
Rydges Kings Square Hotel (from Four Points by Sheraton)	7:20am
Sebel East Perth (from Mantra on Hay)	7:20am
Sebel West Perth (from Four Points by Sheraton)	7:20am
The Adnate - Art Series (from Holiday Inn City Centre)	7:20am
The Westin Hotel (Red Tourist Stop, 471 Hay Street)	7:30am
Tribe Perth (from Club Wyndham)	7:15am

NORTHBRIDGE Pick up from Northbridge Coach Bay, 180 William St

Alex Hotel (from Northbridge Coach Bay)	7:00am
Attika Hotel (from Northbridge Coach Bay)	7:00am
Best Western (from Northbridge Coach Bay)	7:00am
Billabong Backpackers (from Northbridge Coach Bay)	7:00am
Britannia on William (Northbridge Coach Bay)	7:00am
Doubletree by Hilton Perth Northbridge (Northbridge Coach Bay)	7:00am
Emperors Crown (from Northbridge Coach Bay)	7:00am
Great Southern Hotel (from Northbridge Coach Bay)	7:00am
Hostel G (from Northbridge Coach Bay)	7:00am
Northbridge Coach Bay (180 William St, Northbridge)	7:00am

SCARBOROUGH Pick up from hotel listed below only

Ramada Scarborough (from Rendezvous Hotel Scarborough)	7:00am
Rendezvous Hotel Scarborough	7:00am
Seashells (from Rendezvous Hotel Scarborough)	7:00am
Quest Scarborough (from Rendezvous Hotel Scarborough)	7:00am

Please note pick up times may vary for afternoon, evening and Rottnest ferry transfers. Please enquire on booking. We do not pick up from Airbnb or private addresses.



If you miss your pick up, CALL 08 6270 6060 IMMEDIATELY.

Please be ready and waiting on the roadside 10 minutes prior to stated time. Pick up may vary depending on traffic. Look for an Australian Pinnacle Tours coach. No hotel drop offs after morning tours. Retail and booking office - Barrack Street Jetty. Main Departure Point - CROWN PERTH, Riverside Exit, next to McDonalds. Australian Pinnacle Tours, a division of The Pinnacle Travel Group Passenger Transport Services Pty Ltd. ABN 35140853247 WA Omnibus Lic. No. 5885

- COACH
- 4WD VEHICLE
- TRAIN/TRAM
- CRUISE
- WILDFLOWER SPOTTING
- FOOD INCLUDED

