

# Western Australia

# BROOME

## DAY TOURS & EXCURSIONS

Dampier Peninsula | Gantheaume Point  
One Arm Point | Cable Beach | Willie Creek



# BROOME TOWN



## Afternoon Broome, Beach & Sunset Tour

**Departs Broome:** Sun, Tue, Thurs 12:30pm  
 Additional operating days available in peak season  
**Returns:** 6:30pm (approx.)  
**Duration:** 6 hrs **Distance:** 25km

Prices	Tour Code	Adult	Concession	Child
01/04/2024-30/09/2024	BS	FROM \$99	FROM \$89	FROM \$59



### Tour Itinerary

#### Willie Creek Pearl Luggers & Sun Pictures

Our afternoon begins with a sampler tour on the perils of the deep, hearing what early pearl divers had to endure. The tour continues onto Chinatown, visiting Sun Pictures, the world's oldest operating picture gardens. We continue to the Roebuck Bay Lookout, for a brief stop, to take in the spectacular views of Roebuck Bay and Dampier Creek.

#### Spinifex Brewery

We stop at Spinifex Brewery to enjoy a beer tasting accompanied with light snacks. Learn about one of the most exciting breweries in Broome, before heading out of town.



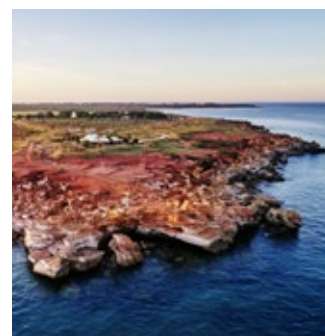
#### Japanese Cemetery

Travel to Town Beach and learn of Broome's One Day War before continuing on to the Japanese Cemetery, which highlights the close ties the Japanese established between Broome and its pearling industry. We then visit Broome Port, which is known for being the largest deep-water access port servicing the Kimberley region.



#### Gantheaume Point

Afterwards, we move onto Gantheaume Point - most commonly known for its red rock cliff face, dinosaur footprints and Anastasia's Pool. We head down to Gantheaume Beach to enjoy some light refreshments and nibbles while admiring the sunset.



Enjoy a brief visit to the picturesque Cable Beach before a drop off to your hotel, in time for dinner.

**Note:** Infant Price (0-3) \$25 - Food is not included. Please advise of any dietary requirements at time of booking.

### Day Tour Operating Timetable\*

Tour Name	Code	M	Tu	W	Th	F	Sa	Su
Afternoon Broome, Beach & Sunset Tour	BS		•		•			•
Dampier Peninsula and Aboriginal Communities Tour (Cygnet Bay)	CL/CLF	•		•		•		
Willie Creek Pearl Farm Tour	WCPL/L	•	•	•	•	•	•	•

\*Additional operating days available in peak season



# DAMPIER PENINSULA



## Dampier Peninsula and Aboriginal Communities Tour

**Departs Broome:** Mon, Wed, Fri 7:00am  
 Additional operating days available in peak season  
**Returns:** 4WD: 6:30pm Fly: 5:00pm  
**Duration:** 11.5 or 10 hrs **Distance:** 460km

Prices 01/04/2024-30/09/2024	Tour Code	Adult	Concession	Child
	CL	FROM \$289	FROM \$269	FROM \$189
CLF	FROM \$689	FROM \$669	FROM \$589	



### Tour Itinerary

#### Beagle Bay

Just a few kilometres out of Broome, we head north on Cape Leveque Road to arrive at our first stop, Beagle Bay Aboriginal Community. Here we visit the famous Sacred Heart Church, with its exquisite Pearl Shell Altar, built in 1918 by the Pallottine Monks, before stopping for a prepared morning tea.



#### Cygnets Bay

Next stop is Cygnets Bay Pearl Farm where we enjoy a chef prepared lunch and an in-depth Pearl Farm Tour. A family owned business, this is Australia's oldest operating Pearl Farm. Following the tour, take the opportunity to also visit their showroom to see where some of the finest South Sea Pearls are grown and harvested.

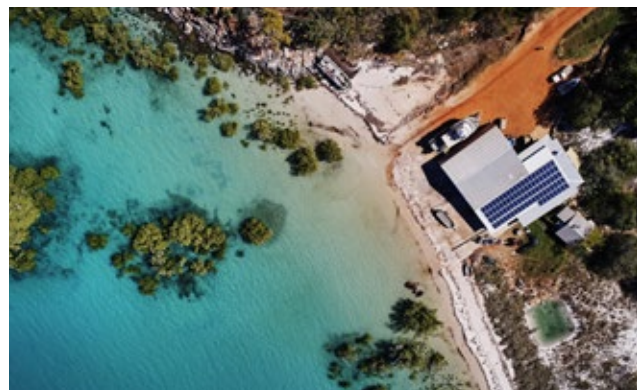


#### One Arm Point

Heading further north to One Arm Point, also known as Ardyaloon, we visit this remote Indigenous community with amazing views of the Buccaneer Archipelago. Here we enjoy a guided visit to the Trochus Shell Hatchery & Aquaculture Centre and get an insight into aquaculture and the strong connection the Bardi Jawi have to their country as saltwater people. Marvel at the diverse range of locally crafted products and beautiful polished shells, which are also available for purchase.

If time permits, sit back and relax at Jologo beach, or stroll along the beautiful white sands, taking in the amazing scenery.

\*Please note due to the closure of Kooljaman for 2024 this tour does not visit Cape Leveque. When available, an additional visit to the aboriginal community at Lombadina will be included after lunch. This is dependant on the discretion of the community patrons.



#### Cygnets Bay Scenic Flight



We bid farewell to those that have chosen the Scenic Flight (must be pre-booked), before heading back to Broome on the coach arriving in time for dinner.






**Note:** Passengers on the CL/CLF may be spending time with beach access at One Arm Point. Guests are encouraged to bring bathers and towel to use these facilities. Individual weights and passenger names must be advised when booking the scenic flight option. Please advise of any dietary requirements at time of booking. Infant Price (0-3) \$50.00 - Food is not included, scenic flight option is not available for Infants.

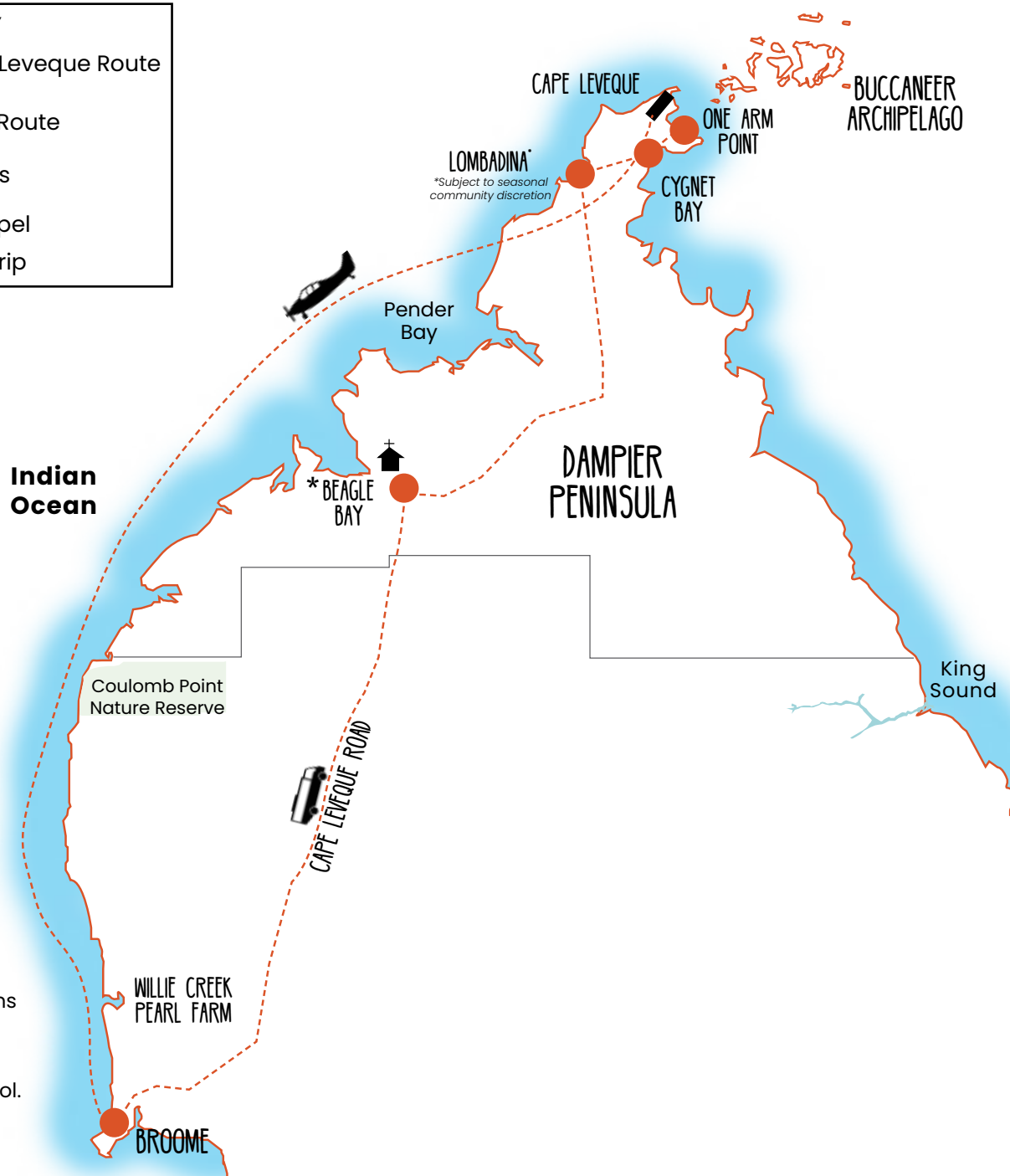




## Dampier Peninsula Map

**KEY**

-  Cape Leveque Route
-  Flight Route
-  Stops
-  Chapel
-  Airstrip



\* All indigenous operated locations may be subject to Government directed closures beyond our control.



# WILLIE CREEK



## Willie Creek Pearl Farm Tour

**Departs Broome:** Daily **With Lunch:** 11:00am  
**Without Lunch:** 8:45am, 10:15am, 1:00pm  
**Returns:** Various **Duration:** 5 hrs  
**Distance:** 80km

Tour Code		Adult	Concession	Child
<b>Prices</b> 01/04/2024-30/09/2024		FROM \$149	FROM \$125	FROM \$85
WCPF				
WCPFL		FROM \$189	FROM \$165	FROM \$100



### Tour Itinerary

Explore the home of the Pearl of Western Australia with the award-winning Willie Creek Pearl Farm Tour. This tour gives a unique insight into the fascinating process of modern cultured pearl farming. Discover exactly what makes the perfect pearl and leave Willie Creek a pearling expert.

#### Hatchery

The journey starts with the collection and spawning of oysters, in Willie Creek's state-of-the-art hatchery. Learn about the pearl technicians' delicate operation of seeding and harvesting oysters. Be guided through the process of valuing pearls and gain an insight into the creation of stunning jewellery.

#### Azure Waters

This tour includes a cruise through azure waters. Gain an insight into the farming operations on the water, having the unique opportunity to view live oysters suspended in their natural environment, amongst native flora and fauna.

All tours include a delicious morning or afternoon tea, depending on the departure time. Tours that have been selected with lunch will enjoy this at the conclusion of the tour. Please advise, at the time of booking, preferred lunch option (meat, fish or vegetarian).

**Note:** Please advise of any dietary requirements at time of booking.



Now proudly part of Pinnacle Travel Group



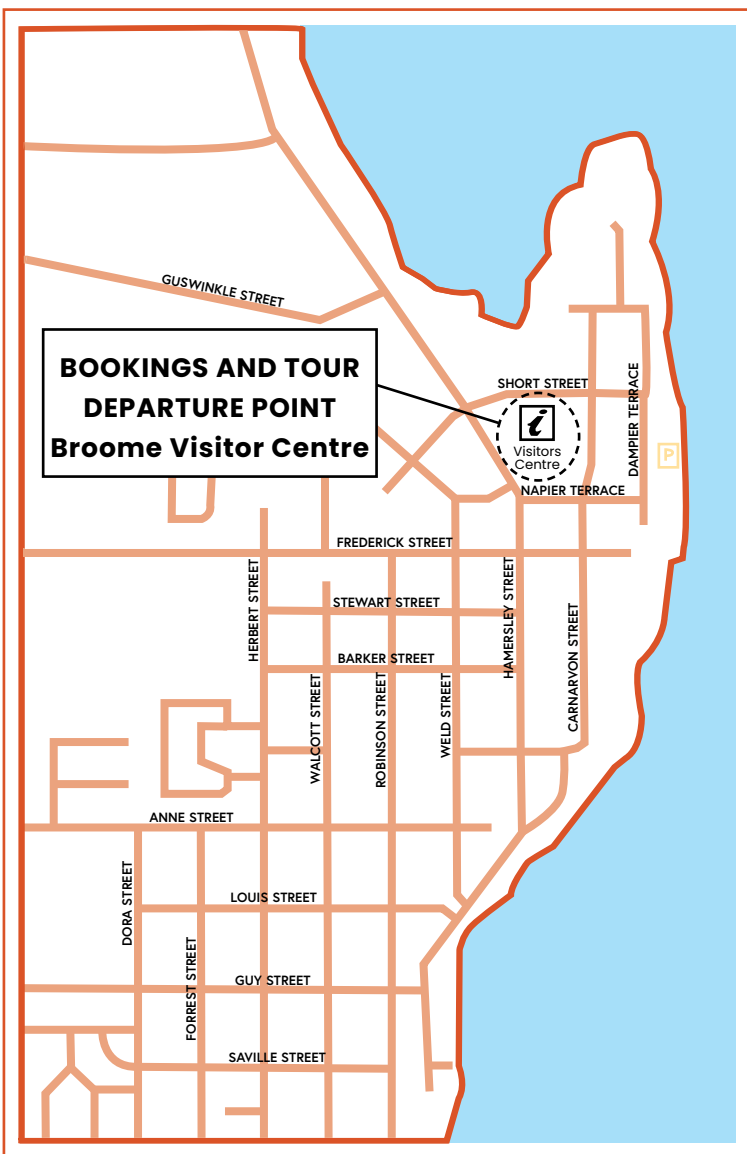
Scan to take an incredible journey of discovery with Kimberley Quest!

**PINNACLE**  
TRAVEL GROUP

**RESERVATIONS PHONE:** Australian Pinnacle Tours **+61 8 6270 6060**

**Email:** [reservations@pinnacletraveltours.com.au](mailto:reservations@pinnacletraveltours.com.au)

**Website:** [www.australianpinnacletraveltours.com.au](http://www.australianpinnacletraveltours.com.au) – Visa, AMEX and MasterCard accepted (surcharges apply).



## TERMS AND CONDITIONS

### PRICES AND BROCHURE VALIDITY

Prices are quoted in Australian dollars (inclusive of GST). Tour prices are per person, are correct at time of publication and can be subject to change at the discretion of Australian Pinnacle Tours (Passenger Transport Services Pty Ltd). This brochure is valid for travel commencing 01 April 2024 until 30 September 2024.

### INCLUSIONS

Tours include all sightseeing, entry fees and meals as stated in the full itinerary (which can be viewed at [www.australianpinnacletraveltours.com.au](http://www.australianpinnacletraveltours.com.au)), however are subject to change solely at the discretion of Australian Pinnacle Tours.

### CONDITIONS OF TRAVEL

Australian Pinnacle Tours reserves the right to alter the route or itinerary of any of its tours and arrange alternative carriers to those advertised if necessary. No refunds will be given in these circumstances or in the event of any delay, curtailment or alteration of a trip resulting from any cause beyond our control, including but not limited to severe weather conditions. Components of trips are weather dependent and Australian Pinnacle Tours cannot be held liable if trip components are not available on the day of travel. Australian Pinnacle Tours can't guarantee pick up or drop off times and is not liable for passenger failure to connect with other services, or any associated costs resulting from such delays. We accept no responsibility for loss or damage to personal belongings or baggage. The Aboriginal components of our tours are subject to cultural conditions. Participants may be absent due to cultural commitments with minimal prior notification and Australian Pinnacle Tours reserves the right to amend the itinerary in these circumstances with no obligation to refund.

### LIABILITY

Whilst we make every effort to safeguard our passengers, Australian Pinnacle Tours cannot be held liable for any damage, injury, or loss of any kind caused by or resulting from any act or omission by its employees, agents or contractors. Passengers should note that adventure travel involves a higher than normal risk and a signed release may be required from all participants before departure. Australian Pinnacle Tours also assumes no responsibility for any act of negligence, act or omission whatsoever by any company whose services are used as part of packages provided, including but not limited to activity and accommodation providers.

### TRAVEL INSURANCE

Travel insurance is not included. Australian Pinnacle Tours strongly recommends that passengers take out their own travel insurance policy which covers personal liability, cancellation, loss of luggage and personal effects, specific COVID-19 insurance cover in the event of being unable to travel.

### DEPARTURE POINTS

Pick-up details will be advised at time of booking. Hotel pick-ups are available on request at time of booking, from select Broome hotels.

### CANCELLATION POLICY

Due to the extensive organisation involved with touring, a strict cancellation fee will be applicable to compensate for costs and lost revenue. We strongly recommend you take out travel insurance to cover against such charges. Australian Pinnacle Tours is subject to the cancellation policies of all local suppliers used for some components on our tours. Any cancellation policies or fees from local suppliers will be required to be adhered to by clients of Australian Pinnacle Tours.

Once a booking is made the following cancellation fees will apply:

#### Day Tours

Full payment required on booking.

#### Cancellation Fees

Fees still apply for any COVID related reason.

5 – 3 days prior to departure: 50% of total price.

Within 48 hours of departure: 100% of total price.

If you fail to join a tour, join it after departure, or leave it prior to its completion, no tour refund can be made. The above cancellation fees are in addition to fees which may be levied by accommodation house properties, travel agents or third party tour and transport operator cancellation fees.

#### Changes and Minimum Numbers Requirement

Tours may be cancelled and changed if required minimum numbers are not met.

Minimum numbers for all tours are 6 adults. Please note that certain tours are not suitable for infants and children as stated. If a child is taken on tour, Australian Pinnacle Tours applies a separate seat cost for the tour. No child will sit with a parent on the same seat due to coach and bus regulations in Western Australia.

#### Other Change/Amendment Fees for all Tours

Amendments to any other arrangements made in conjunction with your trip may incur an AU\$100 administration fee per booking per change. This fee is in addition to any charges levied by hotels, ground operators or airlines. No amendments are permitted to your booking within 7 days of departure. You are strongly advised to take out cancellation insurance at the time of booking which will cover cancellation fees. If you leave a trip for any reason after it has commenced we are not obliged to make any refunds for unused services.

#### Cancellation by Australian Pinnacle Tours

We may cancel a trip at any time. We may cancel a trip at any time prior to departure if, due to terrorism, natural disasters, political instability or other external events\* it is not viable for us to operate the planned itinerary. If we cancel your trip, you can transfer amounts paid to an alternative departure date or alternatively receive a full refund. In circumstances where the cancellation is due to external events outside our reasonable control, refunds will be less any unrecoverable costs. We are not responsible for any incidental expenses that you may have incurred as a result of your booking including but not limited to visas, vaccinations, travel insurance excess or non-refundable flights.

#### CHILD POLICY

Child fares are available on most tours for passengers aged between 4 and 12 years inclusive. Infant Price (0-3 years) is \$25-\$50. Food is not included for passengers aged 0-3 years inclusive. Please note, touring for infants is not generally recommended due to the large distances travelled. Depending on age, children on tour may be required to be seated in booster seats or other child safety accredited seating (supplied by the customer). At all times, Australian Pinnacle Tours reserves the right to not accept children on tours due to safety concerns.

#### CONCESSION FARES

Concession fares apply to holders of a senior or pensioner card and full-time students. Card membership numbers must be quoted at time of booking.

#### PHOTOGRAPHY

Images: Pages 1-6: © Tourism Western Australia, Page 5: © Willie Creek Pearls

\*Including COVID-19 associated reasons.

## COMPLIMENTARY HOTEL PICK UP

We offer FREE hotel pick up from all key hotels in Broome\*. Pick-up times are available at time of booking, please ensure a mobile contact number or accommodation is quoted at time of booking.

Please be ready and waiting on the roadside 10 minutes prior to your pick-up time. Pick ups may vary depending on traffic. Look for an Australian Pinnacle Tours coach. If you have not booked a hotel pick up, please meet at our main departure point located at:

**Broome Visitor Centre, Male Oval,  
1 Hammersley Street, Broome.**  


If you miss your pick up, please call 08 9135 5006 immediately.

\*Check our website for our full list of hotel pick ups.

Australian Pinnacle Tours, a division of Passenger Transport Services Pty Ltd.

ABN 35140853247WA Omnibus Lic. No. 5885

